

32% HCL STORAGE AND LOADING FACILITIES AT QATAR VINYL COMPANY - MESAIEED, QATAR

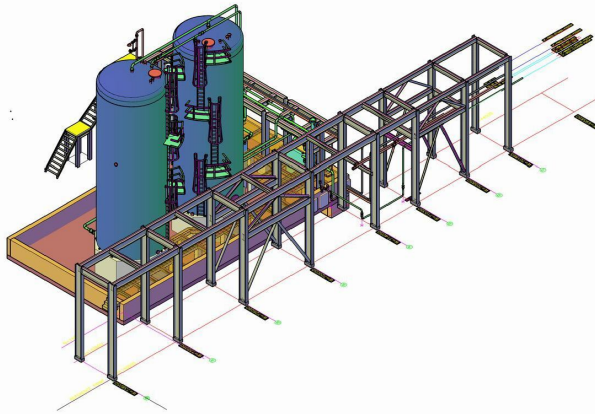


BASIC ENHANCEMENT AND DETAILED ENGINEERING

Start: 2010 Completion: 2011

KEY FEATURES

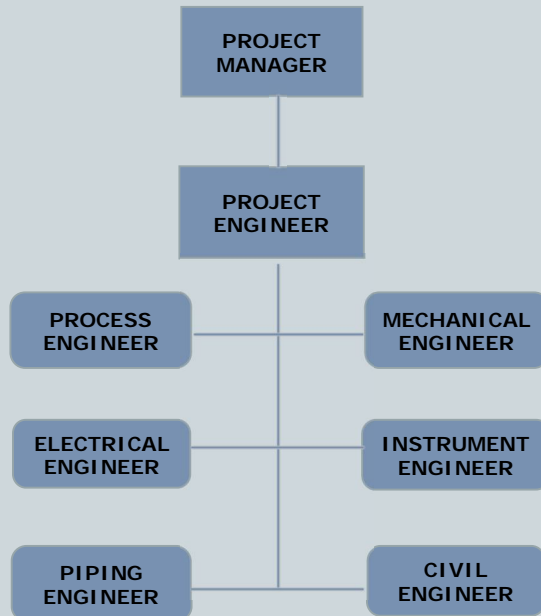
- HCL GRP Storage Tanks each 200m³.
- HCL Waste Water Pump 10m³/h.
- HCL Pump 40m³/h.
- HCL Vent Scrubber and Sludge Tank Vent Scrubber.
- HCL Loading Station 20t Truck loaded in 30min - Top Loading Arm - 72m³/day.



PAN MARITIME SCOPE OF WORK

- > HCL solution coming from the EDC / VCM plant.
- > DCS control system to fill each tank individually or in parallel.
- > Tanks located in a collection pit and in case of leakage fluids pumped via submersible pump to waste water treatment.
- > Gases in HCL tanks via the Vent Scrubber and treated including disposal.
- > HCL is pumped to the truck loading station for export locally.
- > vent gases from truck loading directed back to the HCL tanks.
- > Utilities: Instrument Air, Potable Water / Safety Water, Raw water, Sodium Bisulfide.
- > Emissions: waste Gas, Waste Water - Acidic.
- > DCS Control Systems and ESD Systems / Interlocks.

PAN MARITIME PROJECT TEAM



DESIGN IN 2D AND PREPARATION OF A 3D MODEL USING CADWORX